

Don't be alone, don't do it alone

Kobe Community Welfare Network Project



Together with local and specialized organizations, the **Kobe Community Welfare Network Business** will help you to address the **welfare** concerns and troubles that are **difficult to resolve** using other systems and welfare services. Community Welfare Networkers **in each district's social welfare council** are here for you to consult with.



Stop welfare issues before they happen.

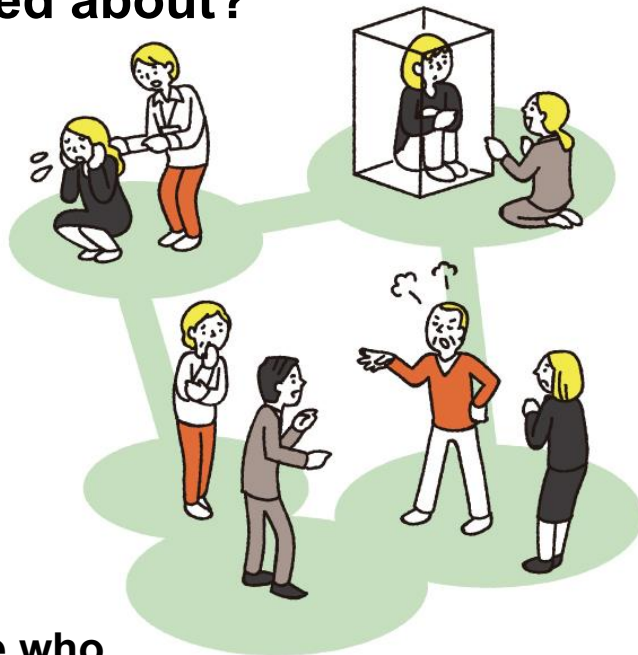
What is a Community Welfare Networker?

We are building new systems and networks to comprehensively tackle the ever-diversifying **welfare** issues people face, with support from **experts** and the community. Our Networkers are helping to create a caring **community**, where people are considerate and approachable.

He's acting a little strange...

She seems troubled...

Is there anyone in your neighbourhood who you are concerned about?

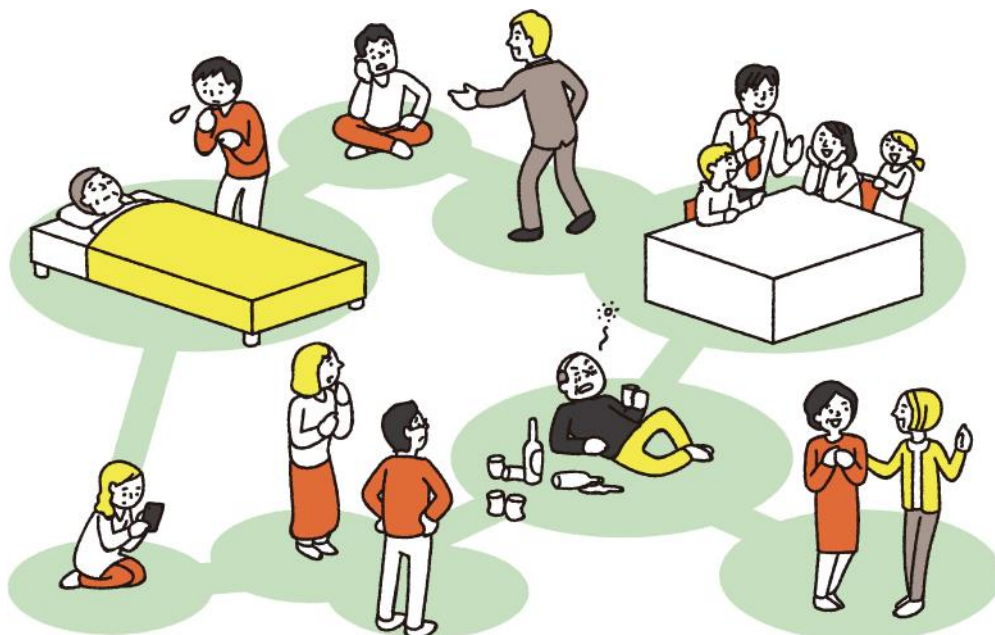


For example, someone who...

- seems to be completely shut off from others
- has garbage overflowing from their house
- appears to be having a really tough time
- has children that won't stop crying...

If so, then...

Please don't think you might be meddling!
Instead of keeping your concerns to yourself,
please directly consult with us.
Early prevention is also vital for addressing
community issues.



How a consultation works

*The types of issues we can help you with depends each situation and other factors.

A

Consultation Desk

If you cannot come to us,
a **Community Welfare Networker** will come to you.
You can also consult with us over the phone!

B

Confirming the situation

After hearing more about your situation over the phone,
a **Community Welfare Networker** will visit you,
so we can confirm what's actually going on.

C

Partnering with the community and specialist organizations

We consider how we can resolve your situation based on what we've heard,
and we work together with you to find a suitable solution.

D

Supporting community initiatives

We value community connections, and suggest systems and places that
can turn a troublesome matter into a good outcome and enjoyable
experience, and also provide a chance to make new friends.

For consultations and inquiries about your concerns and troubles...

Social Welfare Council –Nagata Ward, Kobe City

(Kobe-shi Nagata-ku Shakai Fukushi Kyogikai)

Address 4F, Nagata Ward Office,
3-4-3 Kita-machi, Nagata Ward, Kobe City

Tel. 078-579-2311

Fax. 078-574-2427

E-mail n-syakyou2@neo.famille.ne.jp